

THE GREAT OUTDOORS

Smart Living - Smart Space™





An Economic Development Queensland initiative



Image for illustrative purposes only.



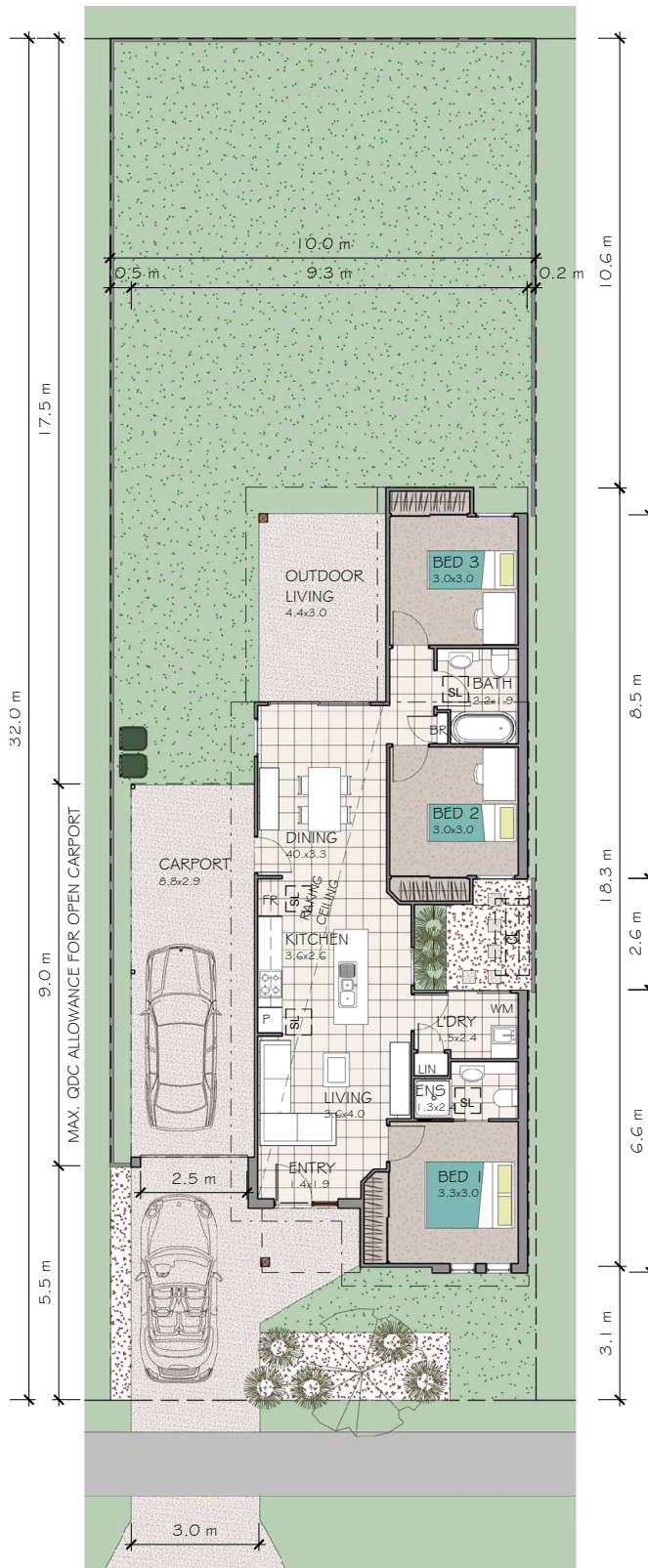
Image for illustrative purposes only.

- 3 Bed 
- 2 Bath 
- 1 Car 
- 1 Jetski 

THE GREAT OUTDOORS

Smart Living - Smart Space™

An Economic Development Queensland initiative



Overview

Designed for families who like to entertain at home and still need flexible storage space for jet skis, bicycles, sporting equipment, etc. The home design comes complete with an 8 metre plus, drive-through carport and has additional space for a shed or children's play equipment.

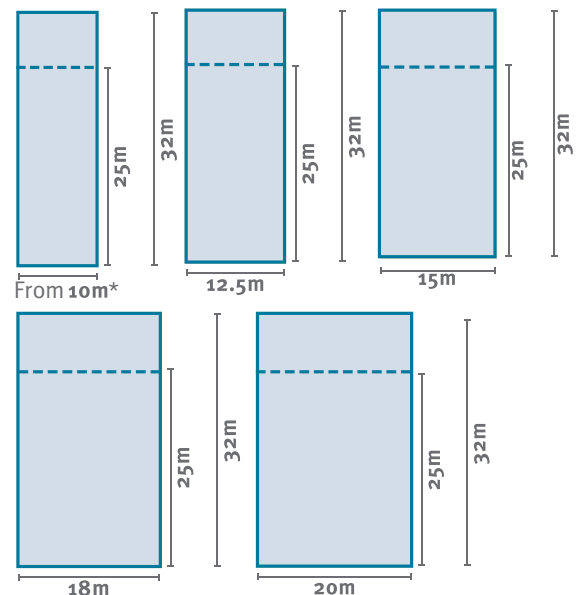
Living:	96.4m ²	3 Bed		1 Car	
Garage:	27.0m ²	2 Bath		1 Jetski	
Outdoor living:	13.4m ²				
Porch:	3.5m ²				
Total:	140.2m ²				

Features:

- GARAGE DOOR OPENING
3.0m high x 2.5m wide
- UNDER COVER VEHICLE AREA
8.8m long x 3.0m wide

Possible land lot sizes:

The Great Outdoors home design has the ability to fit on a variety of lot sizes - refer indicative illustrations below. Please contact an EDQ Sales Professional for current land availability.



Please note: floorplan not to scale

Intellectual Property Rights remain with Economic Development Queensland (EDQ)
All rights reserved. Correct at time of print 09/15.

*10 metre wide lots: House designs sited on a lot less than 11m wide will require individual assessment and final approval by the EDQ covenant and design team to determine its compliance and suitability.