

# GETAWAY

Smart Living - Smart Space™





An Economic Development Queensland initiative

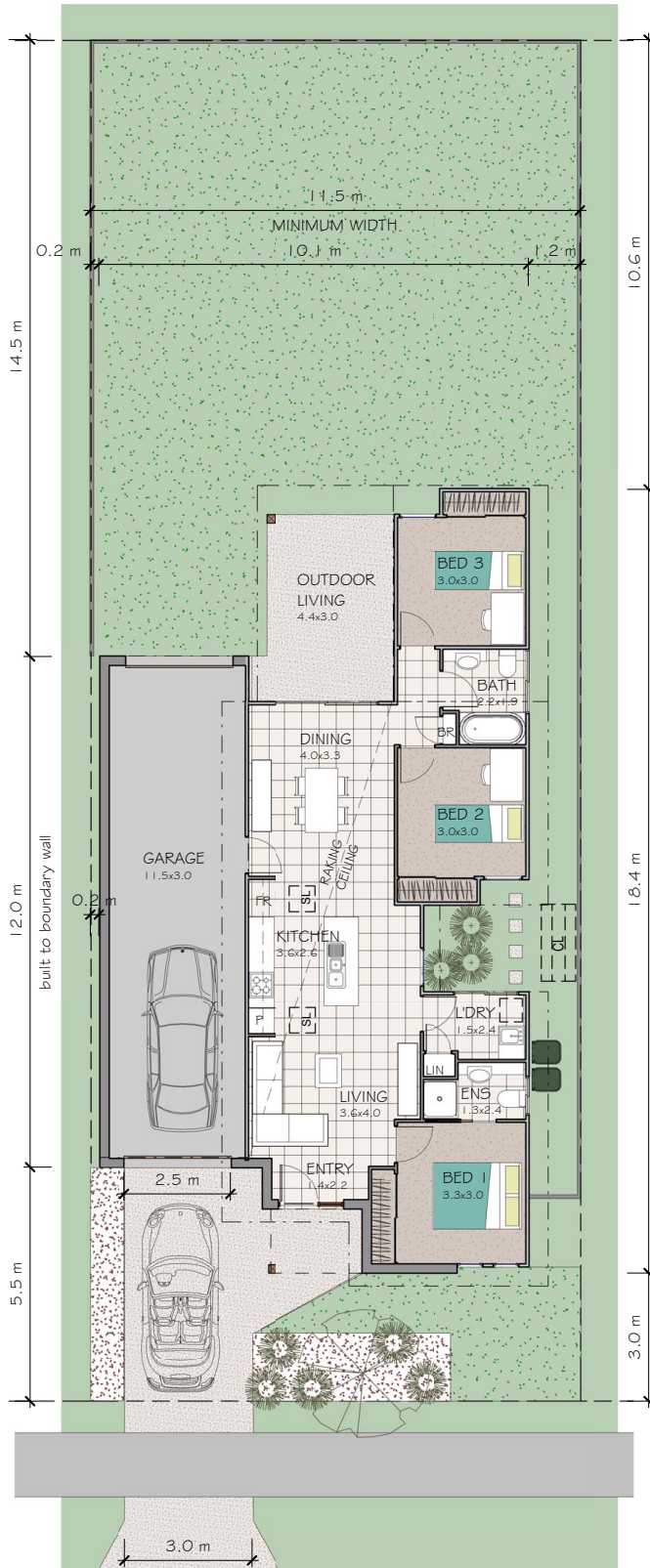


Image for illustrative purposes only.



Image for illustrative purposes only.

- 3 Bed 
- 2 Bath 
- 1 Car 
- 1 Boat 



### Overview

Designed for young couples, families and sports lovers. The design includes outdoor living space that can incorporate children's play equipment or an extended landscaped entertainment area. An 11.5m plus drive-through garage provides the boat lover with plenty of storage, weather protection and security for your vessel and equipment.

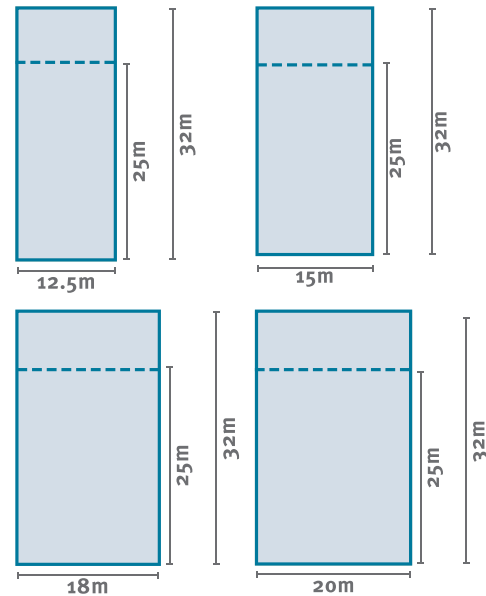
Living:	93.7m <sup>2</sup>	3 Bed		1 Car	
Garage:	41.9m <sup>2</sup>	2 Bath		1 Boat	
Outdoor living:	13.4m <sup>2</sup>				
Porch:	3.4m <sup>2</sup>				
Total:	152.4m <sup>2</sup>				

### Features:

- GARAGE DOOR OPENING  
3.0m high x 2.5m wide
- UNDER COVER VEHICLE AREA  
11.5m long x 3.0m wide

### Possible land lot sizes:

The Getaway home design has the ability to fit on a variety of lot sizes - refer indicative illustrations below. Please contact an EDQ Sales Professional for current land availability.



Please note: floorplan not to scale

Intellectual Property Rights remain with Economic Development Queensland (EDQ)  
All rights reserved. Correct at time of print 09/15.