

# FUTURE PROOF

Smart Living - Smart Space™




An Economic Development Queensland initiative



Image for illustrative purposes only.



Image for illustrative purposes only.

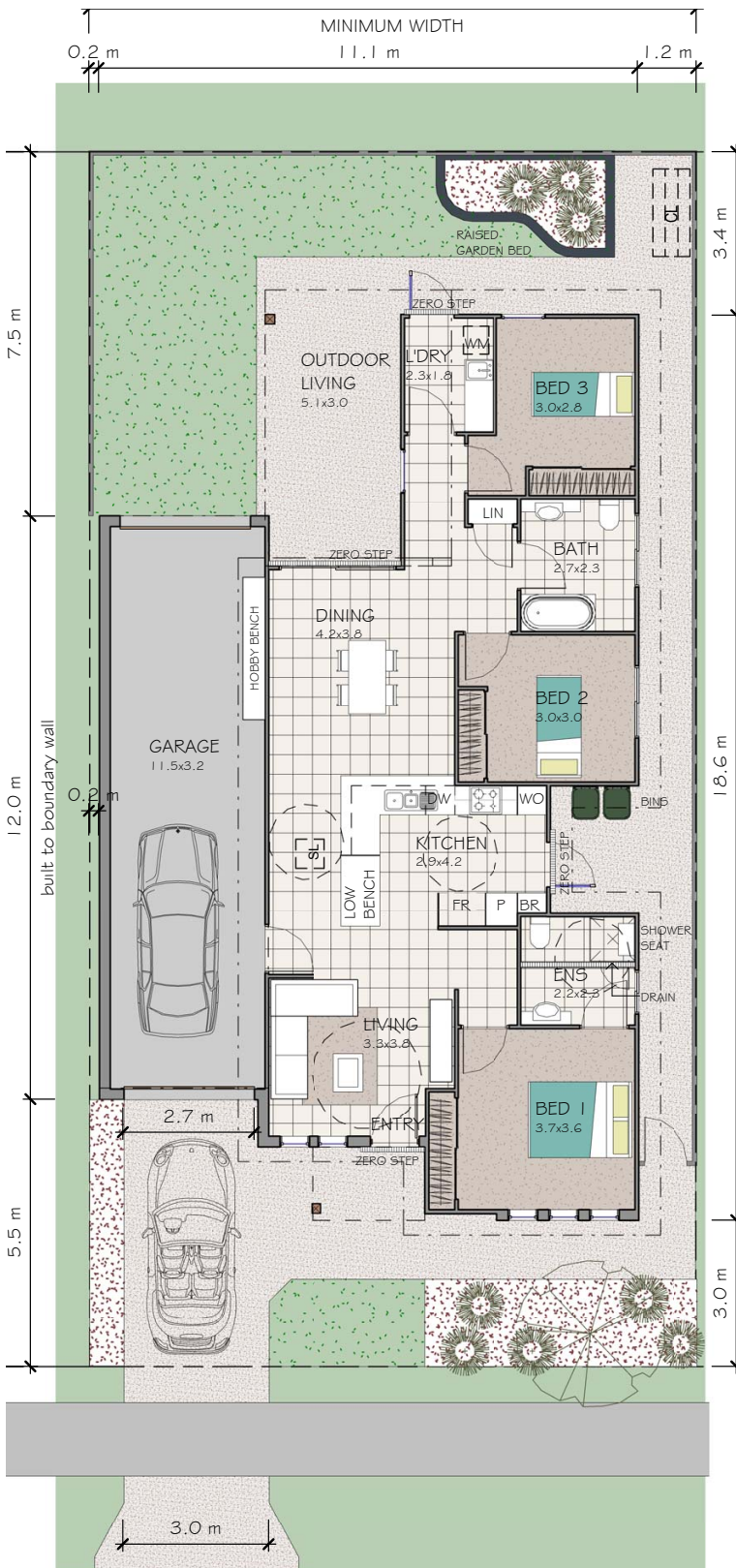
- 3 Bed 
- 2 Bath 
- 1 Car+ 



# FUTURE PROOF

## Smart Living - Smart Space™

An Economic Development Queensland initiative






Please note: floorplan not to scale

Intellectual Property Rights remain with Economic Development Queensland (EDQ)  
All rights reserved. Correct at time of print 09/15.

### Overview

Designed for couples or singles seeking an accessible, easy to live in home that incorporates ageing-in-place features. The home has plenty of room for visiting friends and relatives with space for entertainment.

Living:	117.9m <sup>2</sup>	3 Bed	
Garage:	41.9m <sup>2</sup>	2 Bath	
Outdoor living:	15.1m <sup>2</sup>	1 Car <sup>+</sup>	
Porch:	3.5m <sup>2</sup>		
Total:	178.4m <sup>2</sup>		

### Features:

GOLD STANDARD OF LIVABLE HOUSING DESIGN

GARAGE DOOR OPENING

3.0m high x 2.7m wide

UNDER COVER VEHICLE AREA

11.5m long x 3.2m wide

### Potential additional extras:

- Knee space under cabinets & sinks
- Raised appliances
- Antibacterial finishes
- Raised garden beds
- Shower seat
- Hobby bench with knee space

### Possible land lot sizes:

The Future Proof home design has the ability to fit on a variety of lot sizes - refer indicative illustrations below. Please contact an EDQ Sales Professional for current land availability.

