

LEGEND

--- Existing sewer rising main

● DN150 Sewer main and Manhole Number

○ 1 A1 DN225 Sewer main and Manhole Number

○ 6 A

L=1.0* Certified Distance from downstream manhole
 IL=2.94* Certified Min. invert level of connection
 X=1.5* Certified Offset X (refer note 1.)
 Y=0.5* Certified Offset Y (refer note 1.)
 Type JU Type of Connection

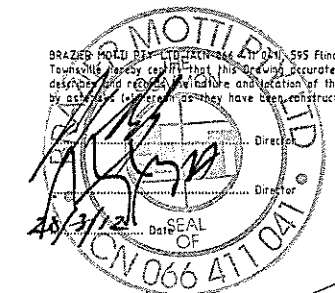
- NOTES**
- This drawing is to read in conjunction with TCC STD DRG's.
 - Location of irrigation conduits were confirmed by landscape architect prior to works.
 - Connection to existing Council services was carried out by Council at the contractors cost.
 - All Manholes are located 1.5m off the property boundary and are to be setout to the centre of the manhole as per the Sewer Manhole Setout Table unless noted otherwise.
 - All new sewers DN150 or greater to be PVC-U to AS/NZ 1260:2002.
 - For sewer pipe grading, pit and house connection levels refer to sewer long sections on AC42-AC44.

SEWER MANHOLE AS CONSTRUCTED TABLE

MH No.	Easting	Northing
9/A	480506.760*	7866718.140*
8/A	480459.399*	7866724.152*
7/A	480380.404*	7866734.225*
6/A1	480410.730*	7866926.144*
5/A1	480436.595*	7866844.574*
4/A1	480456.546*	7866780.342*
3/A1	480434.771*	7866768.739*
2/A1	480389.753*	7866771.864*

Top level of Manholes in relation to finished surface levels are as follows:

MANHOLE LOCATION	TOP OF MAHOLE TO FINISHED SURFACE RL
Inside of Allotment	+150mm
Inside of Road Reserve	Flush



REV	DESCRIPTION	TASK MAN	APPROVED	RREQ No.	DATE
A	AS CONSTRUCTED ISSUE			9396	28/03/12

THIS DRAWING IS COPYRIGHT AND THE PROPERTY OF FLANAGAN CONSULTING GROUP, A REGISTERED BUSINESS NAME OF SOUTH PACIFICSANDS PTY. LTD (ACN 052 933 687) AND MUST NOT BE REPRODUCED WITHOUT WRITTEN PERMISSION

ASSOCIATED CONSULTANTS

brazier motti
www.braziermotti.com.au
595 Flinders Street, Townsville
Phone: 4772 1144 Fax: 4772 2557
Email: townsville@braziermotti.com.au
Job No: 29060/018-01

CLIENT / PROJECT

OONOONBA
Stage 1

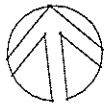
FLANAGAN CONSULTING GROUP
7TH FLOOR CENTRAL PLAZA
370 FLINDERS STREET MALL TOWNSVILLE QLD 4810
P.O. BOX 891 TOWNSVILLE QLD 4810
PHONE: 07 4724 5737
FAX: 07 4721 4884
EMAIL: townsville@fcgroup.com.au
WEB: www.fcgroup.com.au

DESIGNED: SW
 DRAWN: SW
 ACAD No: 5625-AC39 DWG
 SCALE: 1:500

TITLE: SEWER RETICULATION PLAN

DRAWING No: **A1** FULL SIZE
 SHEET 39 OF 54 SHEETS

REVISION: **A**



LEGEND

- Existing sewer rising main
- DN150 Sewer main and Manhole Number
- 1/A DN225 Sewer main and Manhole Number
- 6/A DN300 Sewer main and Manhole Number
- 4/A DN375 Sewer main and Manhole Number

- L=1.0* Certified Distance from downstream manhole
- IL=2.94* Certified Min. invert level of connection
- X=1.5* Certified Offset X (refer note 1.)
- Y=0.5* Certified Offset Y (refer note 1.)
- Type JU Type of Connection

NOTES

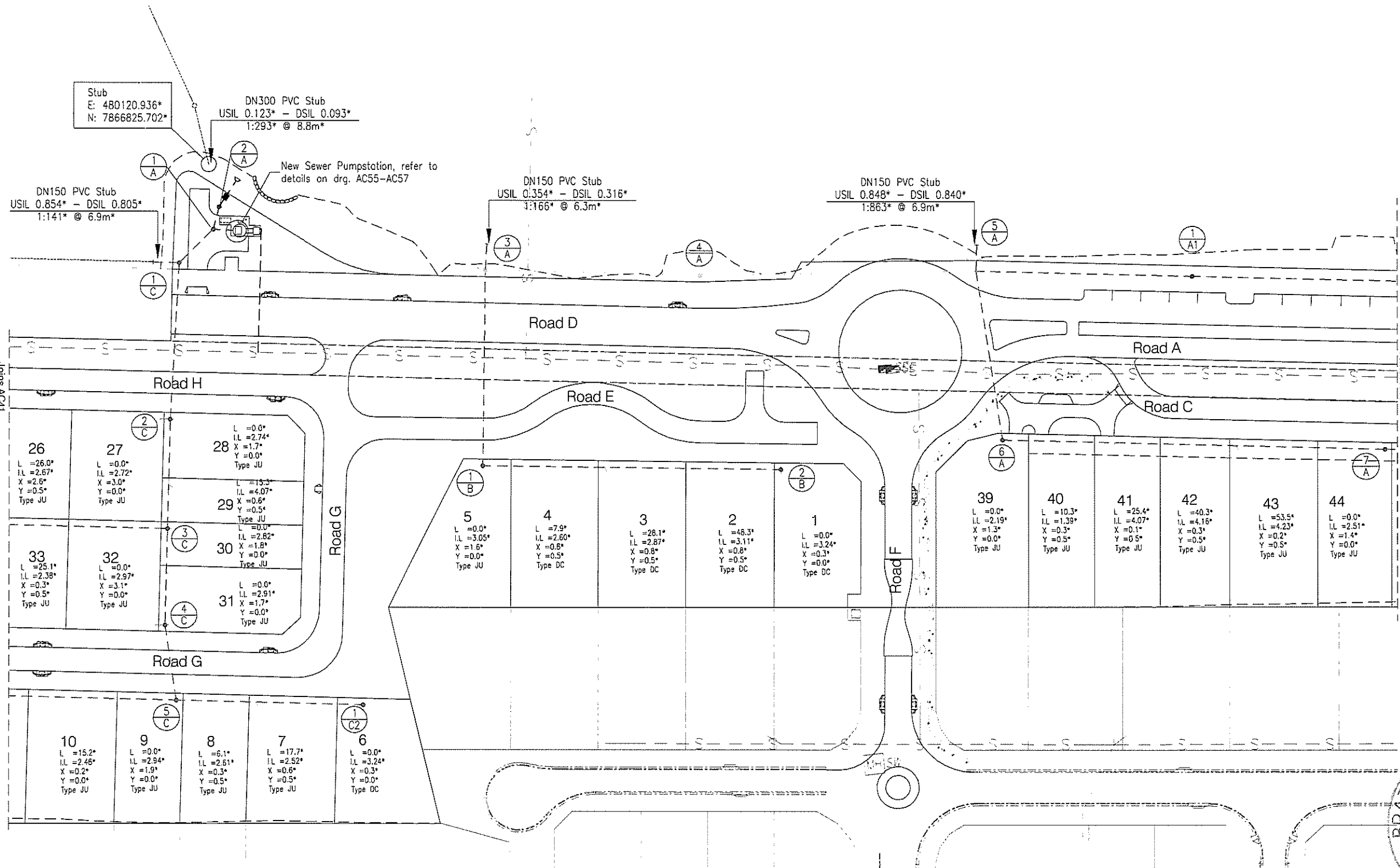
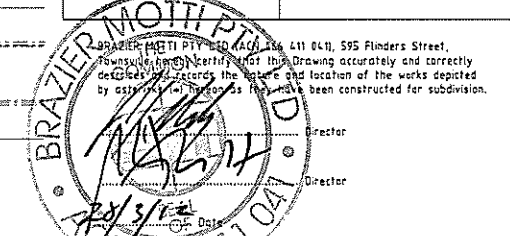
1. For all standard notes refer to Drg AC39.

SEWER MANHOLE AS CONSTRUCTED TABLE

MH No.	Easting	Northing
7/A	480380.404*	7866734.225*
6/A	480293.954*	7866745.653*
5/A	480291.960*	7866783.805*
4/A	480229.070*	7866790.006*
3/A	480180.003*	7866795.768*
2/A	480121.695*	7866816.389*
1/A	480120.196*	7866811.306*
1/A1	480340.437*	7866778.245*
2/B	480242.682*	7866743.386*
1/B	480175.270*	7866751.896*
5/C	480100.563*	7866705.666*
4/C	480099.870*	7866722.896*
3/C	480102.707*	7866744.768*
2/C	480105.815*	7866769.390*
1/C	480111.407*	7866804.789*
1/C2	480138.226*	7866700.711*

Top level of Manholes in relation to finished surface levels are as follows:

MANHOLE LOCATION	TOP OF MAHOLE TO FINISHED SURFACE RL
Inside of Allotment	+150mm
Inside of Road Reserve	Flush



REV	DESCRIPTION	TASK MAN.	APPROVED	REQ No.	DATE
A	AS CONSTRUCTED ISSUE			9396	27/03/12

THIS DRAWING IS COPYRIGHT AND THE PROPERTY OF FLANAGAN CONSULTING GROUP, A REGISTERED BUSINESS NAME OF SOUTH PACIFIC SANDS PTY. LTD. (ACN 052 933 667) AND MUST NOT BE REPRODUCED WITHOUT WRITTEN PERMISSION.

ASSOCIATED CONSULTANTS

brazier motti
www.braziermotti.com.au
595 Flinders Street, Townsville
Phone: 4772 1144 Fax: 4772 2557
Email: townsville@braziermotti.com.au
Job No: 29060/018-01

CLIENT / PROJECT

OONOONBA
Stage 1

FLANAGAN CONSULTING GROUP
7TH FLOOR CENTRAL PLAZA
370 FLINDERS STREET MALL TOWNSVILLE
P.O. BOX 891 TOWNSVILLE QLD 4810
PHONE 07 4724 5737
FAX 07 4721 4884
EMAIL townsville@fcg.com.au
WEB www.fcg.com.au

DESIGNED: [Signature]

DRAWN: SW

ACAD No. 5625-AC40 DWG

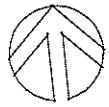
SCALE: 1:500

TITLE: SEWER RETICULATION PLAN

DRAWING No. **A1** FULL SIZE

REVISION: **A**

SHEET 40 OF 54 SHEETS



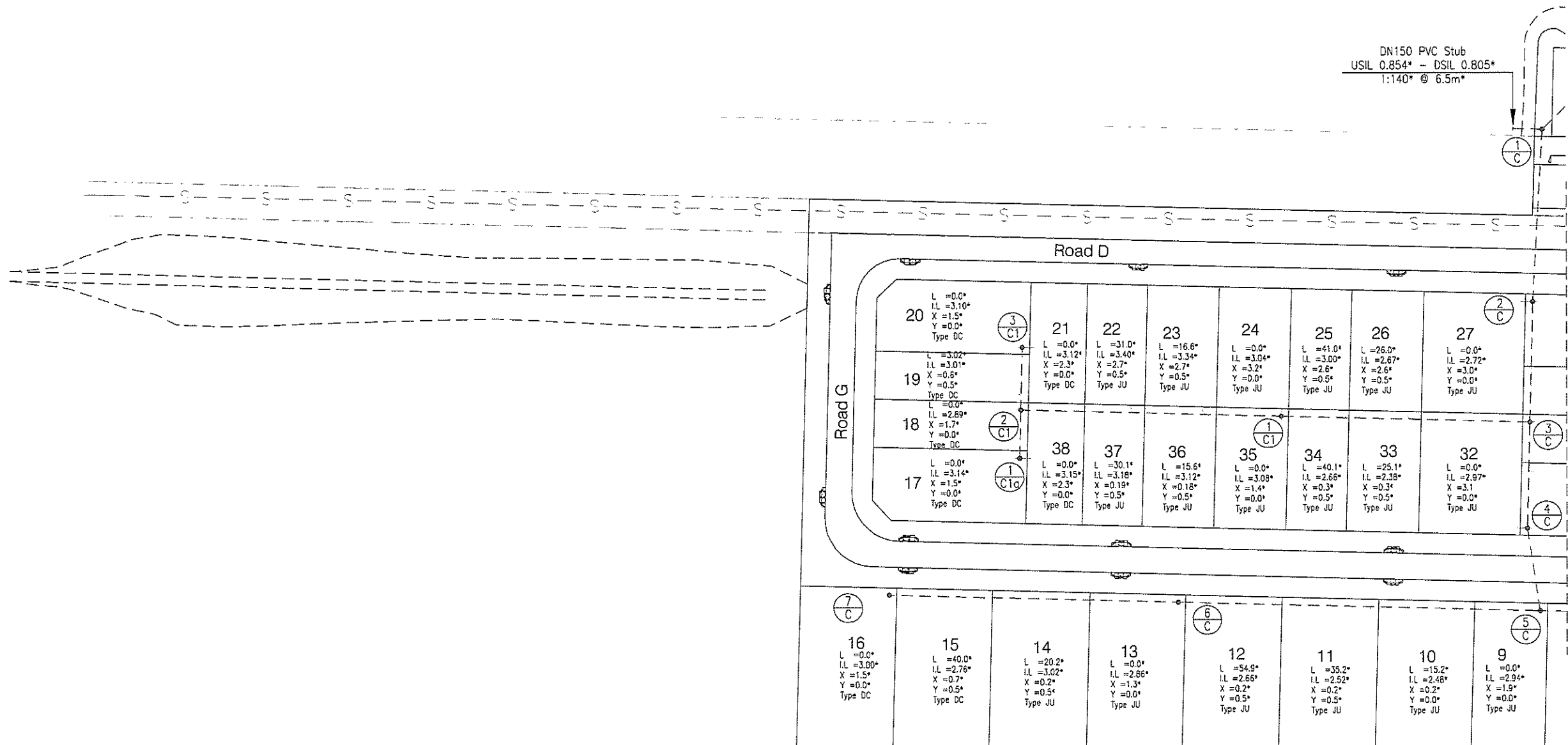
LEGEND

- - - - - Existing sewer rising main
- DN150 Sewer main and Manhole Number
- 1/A1 DN225 Sewer main and Manhole Number

L=1.0* Certified Distance from downstream manhole
 IL=2.94* Certified Min. invert level of connection
 X=1.5* Certified Offset X (refer note 1.)
 Y=0.5* Certified Offset Y (refer note 1.)
 Type JU Type of Connection

NOTES

1. For all standard notes refer to Drg AC39.

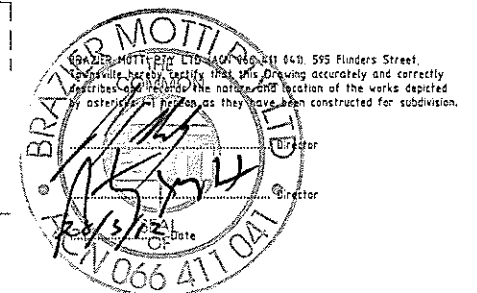


SEWER MANHOLE AS CONSTRUCTED TABLE

MH No.	Easting	Northing
7/C	479961.998*	7866723.131*
6/C	480026.354*	7866714.967*
5/C	480100.563*	7866705.666*
4/C	480099.870*	7866722.896*
3/C	480102.707*	7866744.768*
2/C	480105.815*	7866769.390*
1/C	480111.407*	7866804.789*
3/C1	479999.587*	7866770.619*
2/C1	479998.068*	7866757.886*
1/C1	480051.702*	7866751.126*
1/C1a	479996.717*	7866748.065*

Top level of Manholes in relation to finished surface levels are as follows:

MANHOLE LOCATION	TOP OF MAHOLE TO FINISHED SURFACE RL
Inside of Allotment	+150mm
Inside of Road Reserve	Flush



REV	DESCRIPTION	TASK MAN.	APPROVED	RFEQ No	DATE
A	AS CONSTRUCTED ISSUE			9396	27/03/12

THIS DRAWING IS COPYRIGHT AND THE PROPERTY OF FLANAGAN CONSULTING GROUP, A REGISTERED BUSINESS NAME OF SOUTH PACIFIC SANDS PTY. LTD (ACN 052 933 687) AND MUST NOT BE REPRODUCED WITHOUT WRITTEN PERMISSION.

ASSOCIATED CONSULTANTS

brazier motti
 www.braziermotti.com.au
 595 Flinders Street, Townsville
 Phone: 4772 1144 Fax: 4772 2557
 Email: townsville@braziermotti.com.au
 Job No: 29060/018-01

CLIENT / PROJECT

OONOONBA
 Stage 1

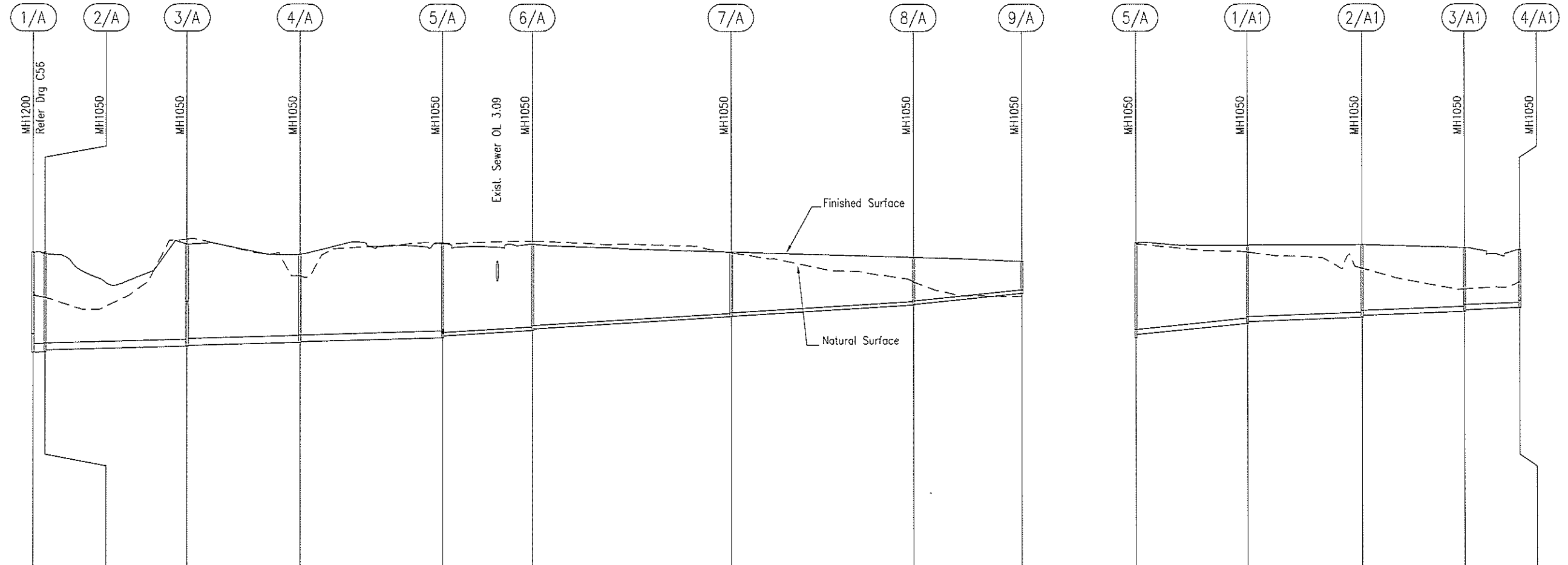
FLANAGAN CONSULTING GROUP
 7TH FLOOR CENTRAL PLAZA
 370 FLINDERS STREET MALL TOWNSVILLE
 P O BOX 891 TOWNSVILLE QLD 4810
 PHONE 07 4724 5737
 FAX 07 4721 4884
 EMAIL townsville@fcggroup.com.au
 WEB www.fcggroup.com.au

DESIGNED: SW
 DRAWN: SW
 ACAD No: 5625-AC41.DWG
 SCALE: 1:500

TITLE: **SEWER RETICULATION PLAN**

DRAWING No: **5625-AC41**
 SHEET 41 OF 54 SHEETS

REVISION: **A**



Datum	-10.000								
Pipe Data	DN375		DN300				DN150		
Grade (1 in ...)	55*	367*	218*	479*	206*	173*	169*	99*	
Depth to Invert	4.431*	4.586* 4.520*	4.638* 4.609*	3.821* 3.784*	4.240* 4.145*	3.817* 3.753*	2.895* 2.838*	2.015* 1.991*	1.506*
Invert Level	-0.089*	0.008* 0.074*	0.243* 0.272*	0.498* 0.534*	0.666* 0.761*	0.947* 1.011*	1.517* 1.574*	2.044* 2.068*	2.548*
Pipe Length	5.299*	62.105*	49.231*	63.194*	38.266*	87.393*	79.573*	47.611*	

Datum	-10.000			
Pipe Data	DN225			
Grade (1 in ...)	98*	257*	232*	185*
Depth to Invert	4.112*	3.374* 3.336*	3.127* 3.084*	2.774* 2.722*
Invert Level	0.794*	1.292* 1.330*	1.523* 1.566*	1.760* 1.812*
Pipe Length	48.753*	49.650*	45.077*	24.788*

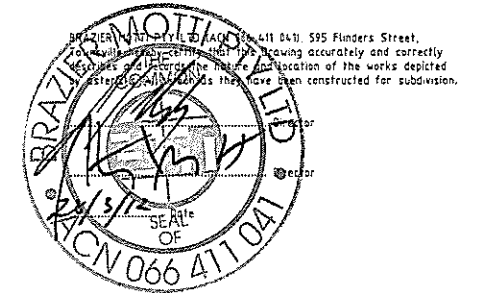
Line No.

A

A1

NOTES

- For As Constructed Lid Levels and house connection details, refer drg. AC39-41.



REV	DESCRIPTION	TASK MAN	APPROVED	RFEQ No.	DATE
A	AS CONSTRUCTED ISSUE			9396	27/03/12

ASSOCIATED CONSULTANTS

brazier motti
www.braziermotti.com.au
595 Flinders Street, Townsville
Phone: 4772 1144 Fax: 4772 2557
Email: townsville@braziermotti.com.au
Job No: 29060/018-01

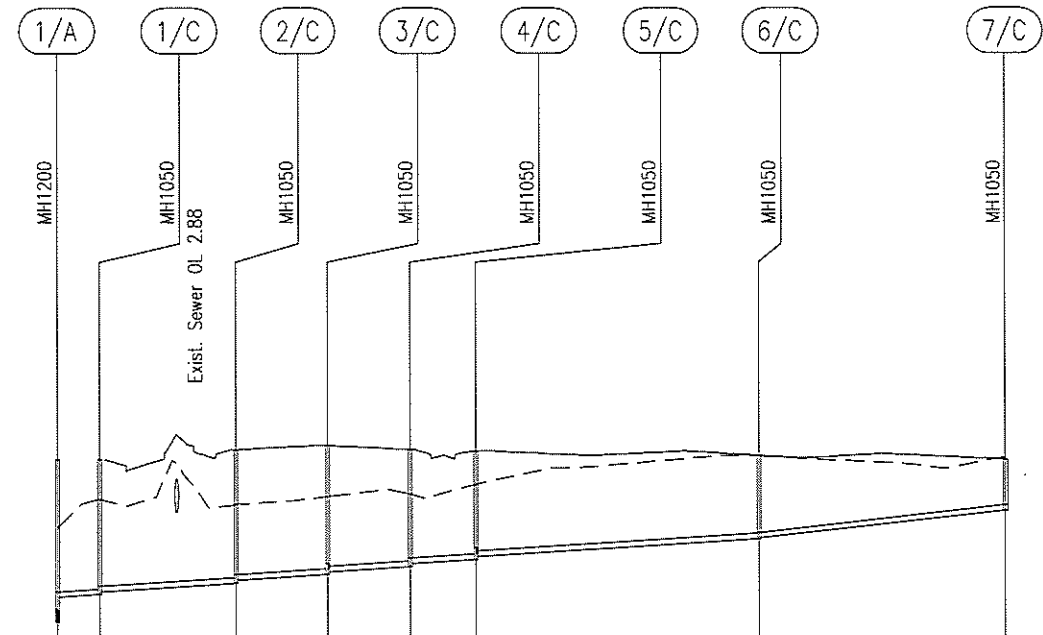
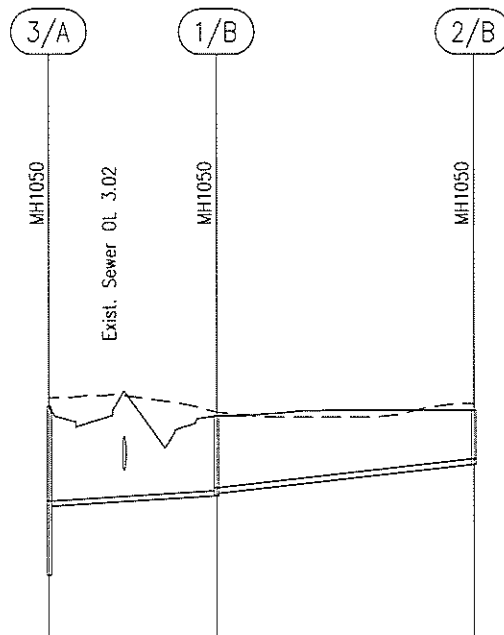
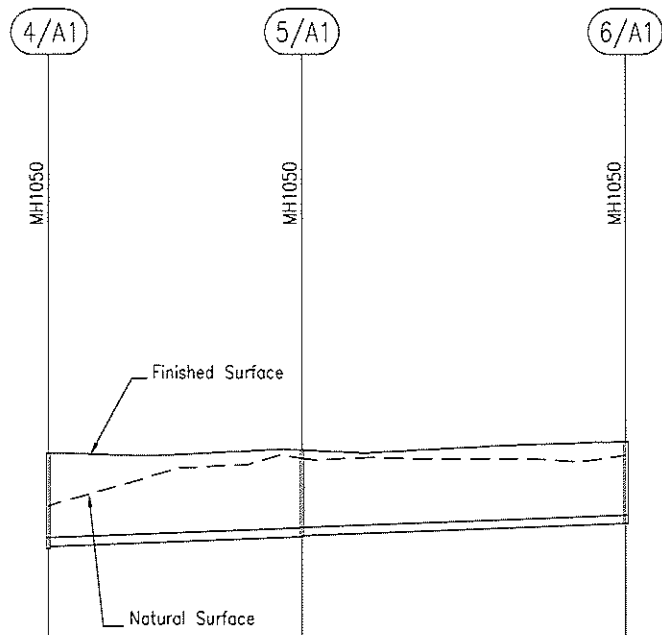
CLIENT / PROJECT

OONOONBA
Stage 1

FLANAGAN CONSULTING GROUP
7TH FLOOR CENTRAL PLAZA
370 FLINDERS STREET MALL TOWNSVILLE
P O BOX 891 TOWNSVILLE QLD 4810
PHONE 07 4724 5737
FAX 07 4721 4684
EMAIL townsville@fcggroup.com.au
WEB www.fcggroup.com.au

DESIGNED	TITLE		REVISION
DRAWN	SEWER LONG SECTIONS		
SCALE	A1	DRAWING No.	A
1:500	FULL SIZE	5625-AC42	
		SHEET 42 OF 54 SHEETS	

THIS DRAWING IS COPYRIGHT AND THE PROPERTY OF FLANAGAN CONSULTING GROUP, A REGISTERED BUSINESS NAME OF SOUTH PACIFICSANDS PTY LTD. (ACN 052 933 687) AND MUST NOT BE REPRODUCED WITHOUT WRITTEN PERMISSION.



Datum	-9.000	
Pipe Data	DN225	
Grade (1 in ...)	233*	244*
Depth to Invert	2.571*	2.364* 2.349*
Invert Level	2.009*	2.310* 2.325*
Pipe Length	67.259*	85.572*

Line No. A1

Datum	-10.000	
Pipe Data	DN150	
Grade (1 in ...)	144*	89*
Depth to Invert	2.847*	2.338* 2.267*
Invert Level	2.034*	2.341* 2.412*
Pipe Length	44.233*	67.948*

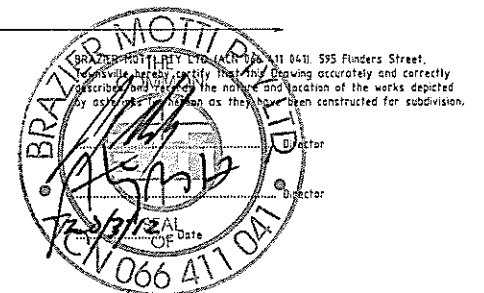
Line No. B

Datum	-9.000							
Pipe Data	DN150							
Grade (1 in ...)	130*	155*	159*	173*	119*	159*	93*	
Depth to Invert	3.690*	3.586* 3.524*	3.459* 3.380*	3.357* 3.267*	3.108* 3.052*	2.869* 2.824*	2.209* 2.176*	1.393*
Invert Level	0.650*	0.736* 0.798*	1.028* 1.107*	1.265* 1.325*	1.451* 1.507*	1.652* 1.697*	2.166* 2.199*	2.900*
Pipe Length	11.160*	35.651*	25.064*	21.809*	17.244*	74.790*	64.872*	

Line No. C

NOTES

- For As Constructed Lid Levels, house connection details, refer drg. AC39-41.



REV	DESCRIPTION	TASK MAN	APPROVED	RPEQ No.	DATE
A	AS CONSTRUCTED ISSUE			9396	27/03/12

THIS DRAWING IS COPYRIGHT AND THE PROPERTY OF FLANAGAN CONSULTING GROUP, A REGISTERED BUSINESS NAME OF SOUTH PACIFICSANDS PTY. LTD. (ACN 052 933 687) AND MUST NOT BE REPRODUCED WITHOUT WRITTEN PERMISSION.

ASSOCIATED CONSULTANTS

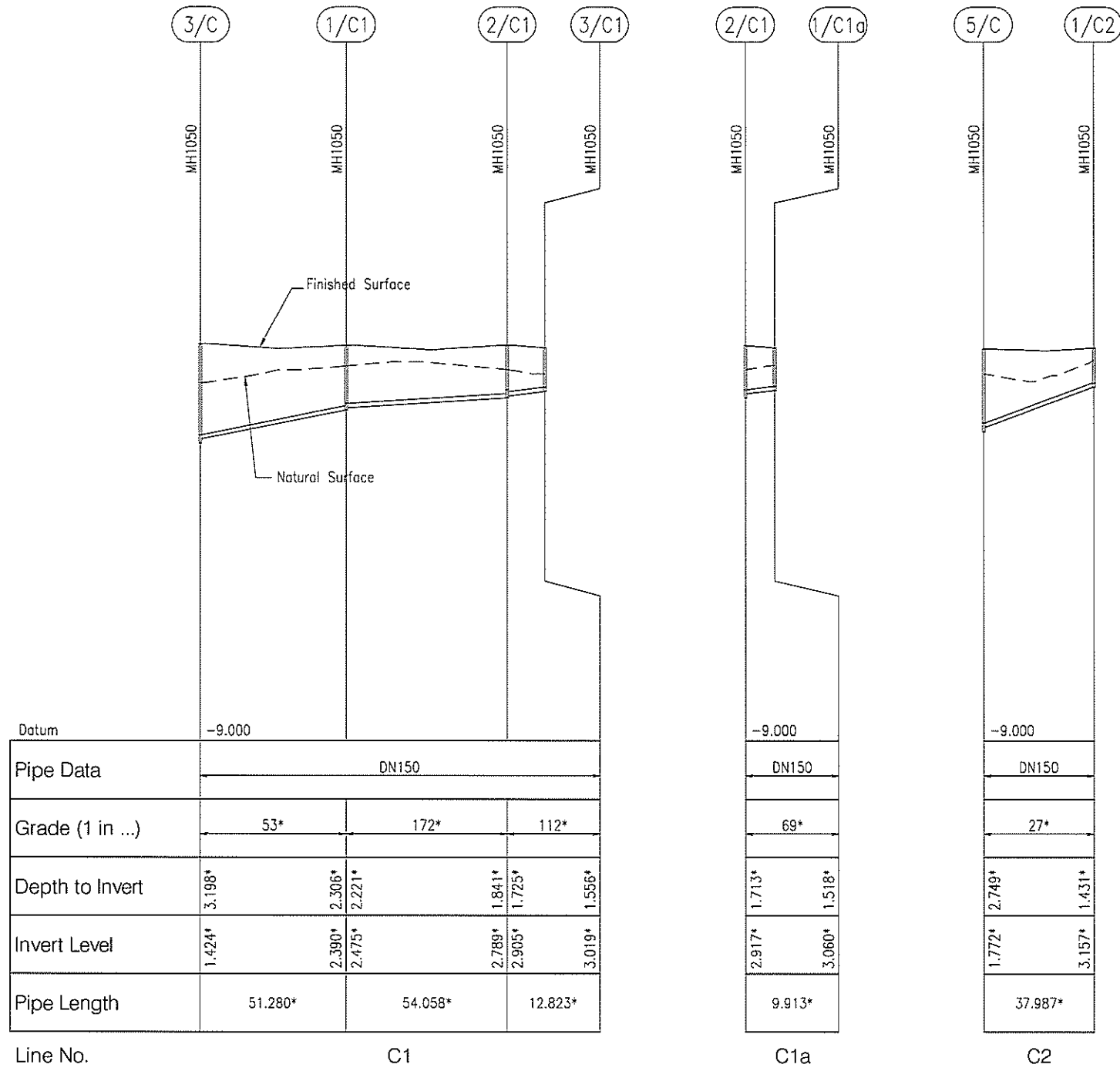
brazier motti
www.braziermotti.com.au
595 Flinders Street, Townsville
Phone: 4772 1144 Fax: 4772 2557
Email: townsville@braziermotti.com.au
Job No: 29060/018-01

CLIENT / PROJECT

OONOONBA
Stage 1

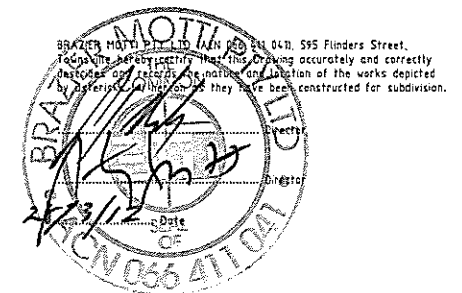
FLANAGAN CONSULTING GROUP
7TH FLOOR CENTRAL PLAZA
370 FLINDERS STREET MALL TOWNVILLE
P.O. BOX 891 TOWNVILLE QLD 4810
PHONE 07 4724 5737
FAX 07 4721 4684
EMAIL townsville@fcggroup.com.au
WEB www.fcggroup.com.au

DESIGNED	TITLE		
DRAWN	SEWER LONG SECTIONS		
SCALE	A1	DRAWING No.	REVISION
1:500	FULL SIZE	5625-AC43	A
		SHEET 43 OF 54 SHEETS	



NOTES

- For As Constructed Lid Levels and house connection details, refer drg. AC39-41.



A	AS CONSTRUCTED ISSUE			9396	27/03/12
REV	DESCRIPTION	TASK MAN.	APPROVED	RPEQ No.	DATE
THIS DRAWING IS COPYRIGHT AND THE PROPERTY OF FLANAGAN CONSULTING GROUP, A REGISTERED BUSINESS NAME OF SOUTH PACIFICSANDS PTY. LTD. (ACN 052 933 667) AND MUST NOT BE REPRODUCED WITHOUT WRITTEN PERMISSION.					

ASSOCIATED CONSULTANTS

brazier mott
www.braziermott.com.au
595 Flinders Street, Townsville
Phone: 4772 1144 Fax: 4772 2557
Email: townsville@braziermott.com.au
Job No: 29060/018-D1

CLIENT / PROJECT

OOONOONBA
Stage 1

FLANAGAN CONSULTING GROUP
7TH FLOOR CENTRAL PLAZA
370 FLINDERS STREET MALL TOWNSVILLE
P O BOX 891 TOWNSVILLE QLD 4810
PHONE 07 4724 5737
FAX: 07 4721 4684
EMAIL: townsville@fcgroup.com.au
WEB www.fcgroup.com.au

DESIGNED RM	TITLE SEWER LONG SECTIONS	
DRAWN SW		
ACAD No. 5625-AC44 DWG	DRAWING No. A1	REVISION A
SCALE 1:500	FULL SIZE	SHEET 44 OF 54 SHEETS