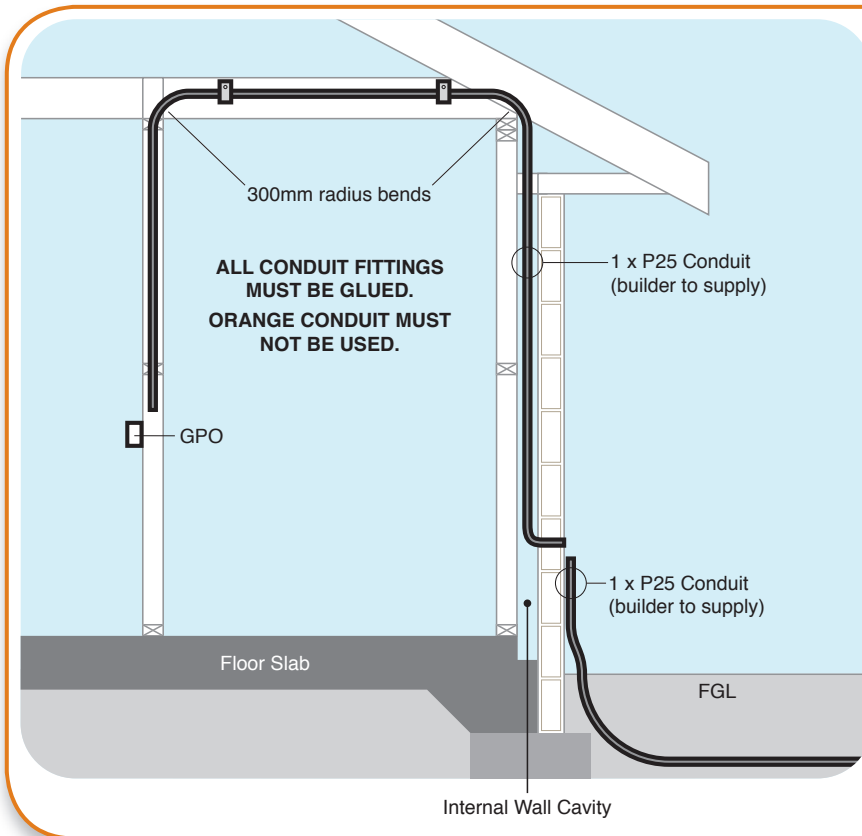


## → Key Information for Builders and Cablers

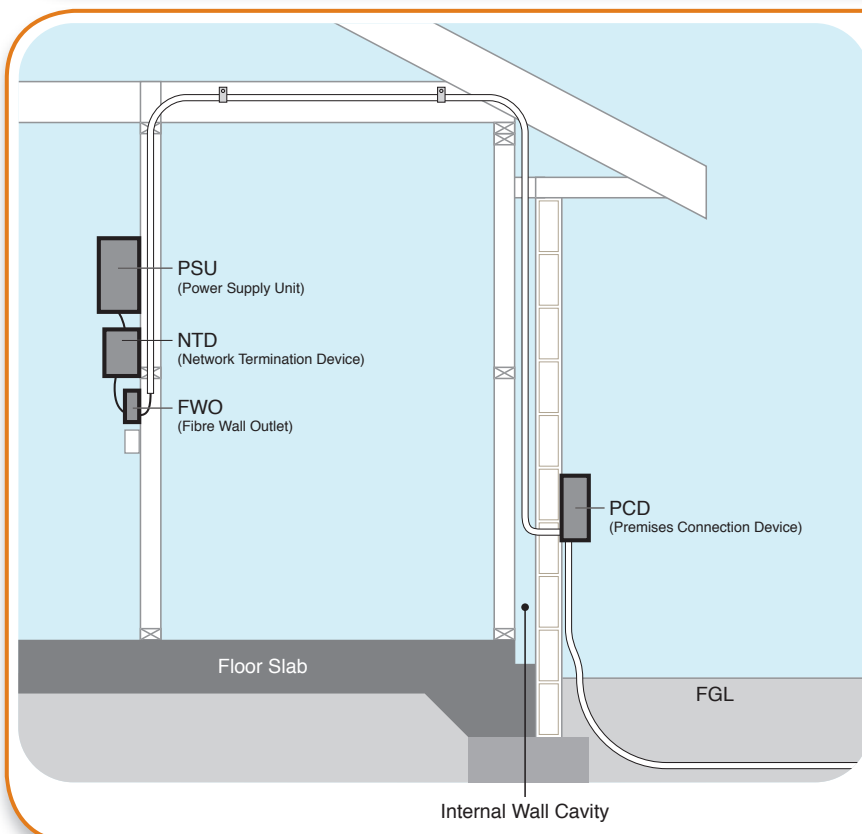


### BUILDER/CABLER TO SUPPLY:

- Use a P25 telecommunications conduit (23mm Internal Diameter) in the trench. Glue all joints using solvent cement.
- Ensure the conduit runs as straight as possible
- Install a drawstring in the conduit
- Fix all P25 telecommunications conduit (23mm internal Diameter) conduits securely to the premises using conduit saddles or similar
- Provide Lead in Conduit (LIC) and power point (GPO) for the installation of the NTD

#### Notes

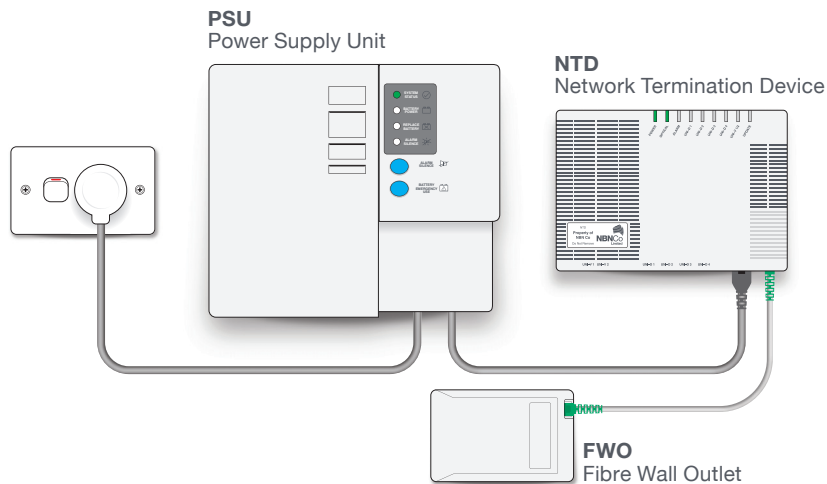
1. Use Rigid White P25 Telecommunications Conduit ONLY
2. Use no more than 3 x 90° bends between draw points. The bend radius of each bend must be no less than 300mm or more.



### NBN CO TO SUPPLY:

- The service drop cable to the PCD location
- The PCD
- The internal fibre optic cable from PCD to the Fibre Wall Outlet (FWO)
- The NTD
- The PSU
- All the fibre optic cables

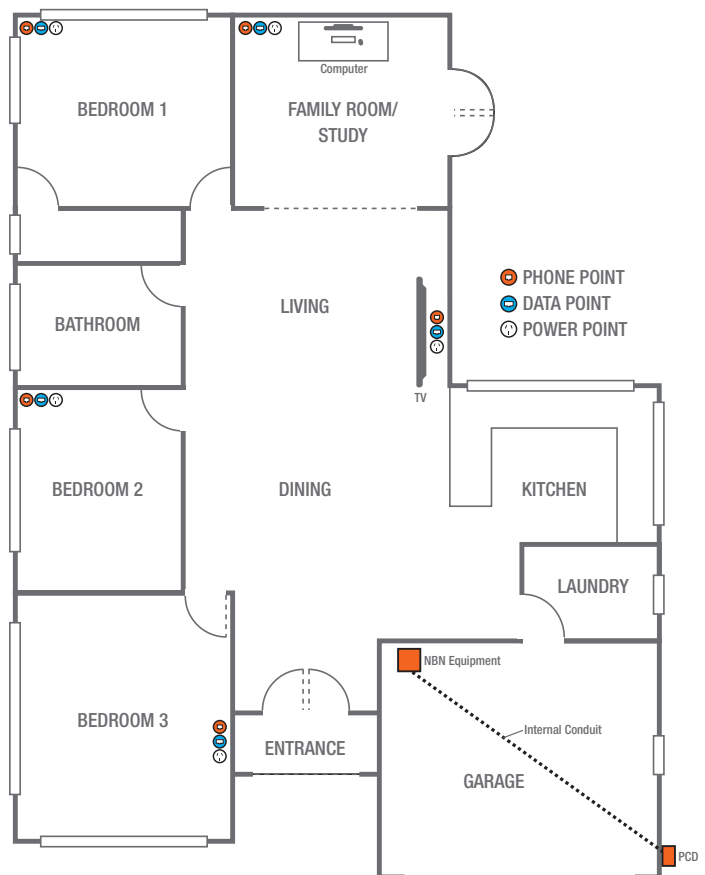
## EQUIPMENT INSTALLED IN THE HOME TO CONNECT SERVICE(S) OVER THE NBN



## PREPARING NEW HOMES, UNITS AND BUILDINGS FOR THE NBN

It's important that Builders and Cablers talk to new homeowners about the telecommunications services they may want to access in their homes and provide guidance on where NBN equipment, phone and data outlets should be located for the services they want.

It's important to remember that if customers want to utilise applications like IPTV via Smart TVs in their living room and telework via HD video conferencing in their office they will need fixed cabling in the home to run these services. A wireless modem connected to the NBN will not allow the speeds they need to enjoy the benefits of these types of services.



## For more information

- visit our website at: [www.nbnco.com.au/NewDevelopments](http://www.nbnco.com.au/NewDevelopments);
- call us on 1800 881 816; or
- email us at: [newdevelopments@nbnco.com.au](mailto:newdevelopments@nbnco.com.au)

This document is subject to copyright and must not be used except as permitted below or under the Copyright Act 1968 (Cth). You must not reproduce or publish this document in whole or in part for commercial gain without the prior written consent of NBN Co. You may reproduce and publish this document in whole or in part for educational or non-commercial purposes as approved by NBN Co in writing.

This document is intended as an informational guide only. NBN Co does not warrant that the processes and information outlined in this document comply with all (or any) applicable laws, codes of practice or standards. The recipient must exercise its own judgement as to how best to perform the activities described in this document in a safe way, and so as to meet the requirements of all applicable laws, codes of practice and standards. The contents of this document should not be relied upon as representing any NBN Co's final position on the subject matter of this document, except where stated otherwise.