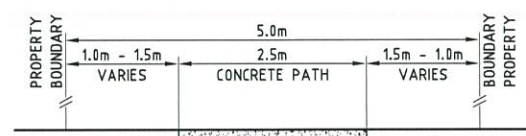


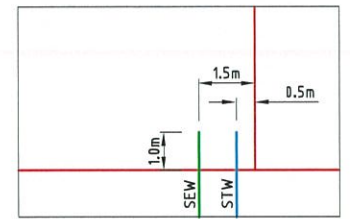
SECTION A-A TYPICAL FILL BATTER

SCALE 1:10



SECTION B-B PEDESTRIAN LANE PATH

SCALE 1:20



TYPICAL ALLOTMENT SERVICES DETAIL

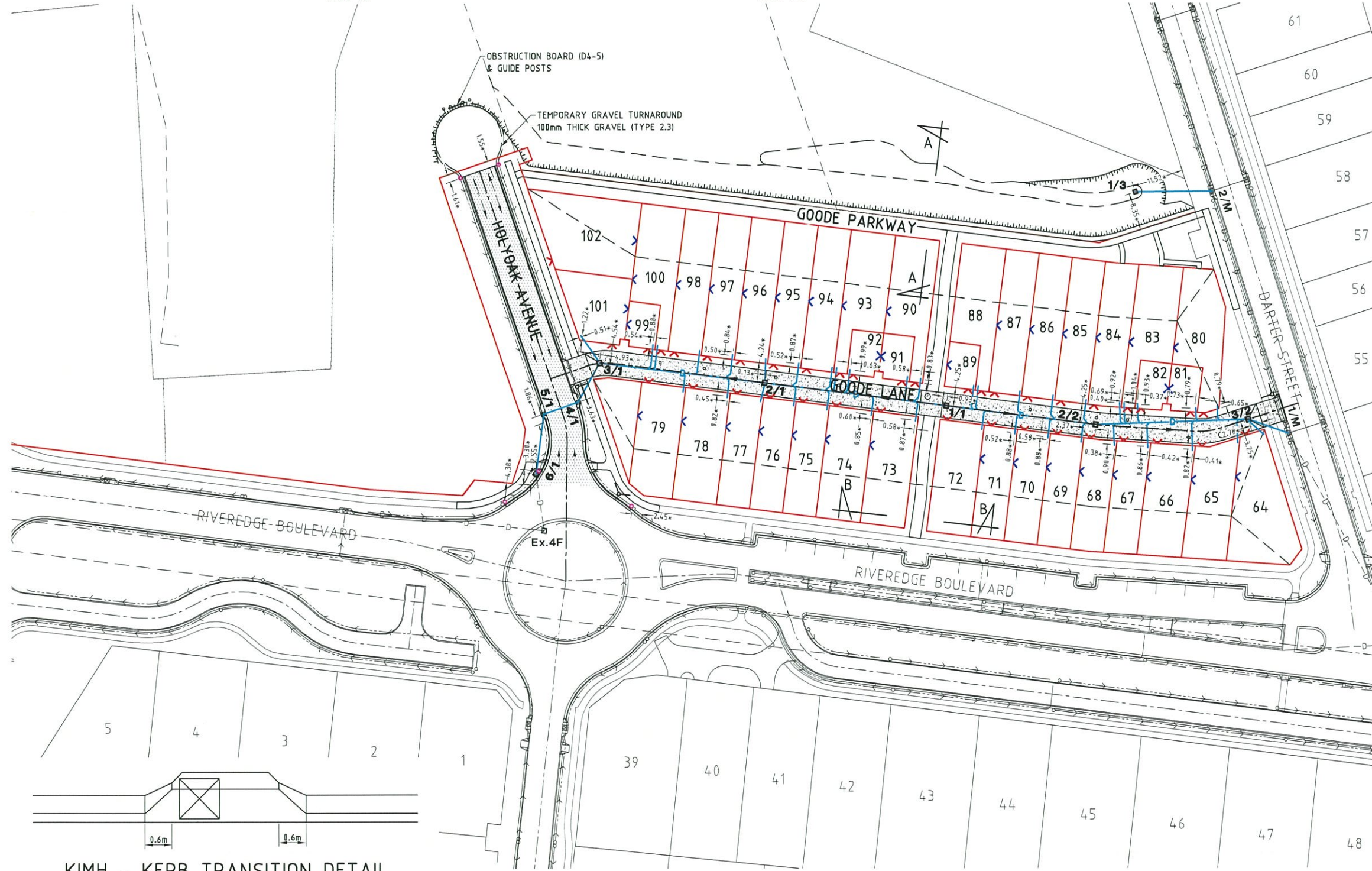
NOTE: ALL STORMWATER HOUSE CONNECTIONS ARE LOCATED AS THE ABOVE ALIGNMENT OFFSET ±100mm U.N.O.

- LEGEND:**
- LAYBACK KERB & CHANNEL (TYPE L1)
 - BARRIER KERB & CHANNEL (TYPE B1)
 - DOUBLE STREET NAME PLATE
 - DIRECTION OF KERB & CHANNEL FLOW
 - SUBSOIL DRAIN & CLEANOUT POINT
 - 30mm DG10 ASPHALT
 - CONCRETE LANE
REFER ULDD01/104 FOR DETAILS
 - KERB RAMP (1.5m WIDE)
 - CONCRETE FOOTPATH FOR DETAILS REFER COUNCIL STANDARD DRAWING SD-070
 - COUNCIL STANDARD DRAWING SD-070
 - MAINTAIN MINIMUM 1.2m TO BACK OF KERB
 - PREFERRED DRIVEWAY LOCATION
 - PREFERRED BUILD TO BOUNDARY

- NOTES:**
1. FOR ROAD LONGITUDINAL AND TYPICAL CROSS SECTIONS, REFER TO DRAWING ULDD01/103 & 104.
 2. FOR INTERSECTIONS, REFER ROADWORKS DETAILS PLAN DRAWING ULDD01/105 & 106.
 3. ALL CHAINAGES SHOWN ARE PEGGED CHAINAGES.
 4. FOR KERB & CHANNEL DETAILS, REFER COUNCIL STANDARD DRAWING SD-020.
 5. FOR SUBSOIL DRAIN DETAILS, REFER ULDD01/103.
 6. FOR KERB RAMP DETAILS, REFER COUNCIL STANDARD DRAWING SD-025.
 7. SUBSOIL DRAINS WERE REVERSE GRADED AT MINIMUM TO ENSURE POSITIVE GRADE.

- STORMWATER LEGEND:**
- STORMWATER DRAINAGE LINE
 - STORMWATER MANHOLE (MANHOLE NO./LINE NO.)
 - 150mm uPVC STORMWATER HOUSE CONNECTION REFER DETAIL THIS SHEET & ULDD01/06
 - KERB INLET PIT (PIT NO./LINE NO.)
 - EXISTING STORMWATER DRAINAGE LINE
 - EXISTING STORMWATER MANHOLE (MANHOLE NO./LINE NO.)
 - EXISTING KERB INLET PIT (PIT NO./LINE NO.)

- STORMWATER NOTES:**
1. FOR STORMWATER LEVELS, PIPE LENGTHS AND CLASS AND MANHOLE TYPES, REFER DRAWING ULDD01/107.
 2. ALL RCP CUTS WERE MADE USING A MASONRY SAW.
 3. ALL RCP'S UNDER ROAD PAVEMENT WERE BACKFILLED WITH CRUSHER DUST, TO UNDERSIDE OF PAVEMENT.
 4. FOR REVEGETATION DETAILS REFER TO JOB SPECIFICATION.



KIMH - KERB TRANSITION DETAIL

SCALE 1:20

BRAZIER MOTTI PTY LTD (ACN 066 411 841), 595 Flinders Street, Townsville hereby certify that this Drawing accurately and correctly describes and records the nature and location of the works depicted by asterisks (*) hereon as they have been constructed for subdivision.

AS CONSTRUCTED ISSUE

REV.	DATE	REVISIONS
A	04/04/13	AS CONSTRUCTED ISSUE

brazier motti
www.braziermotti.com.au
595 Flinders Street, Townsville
Phone: 4772 1144 Fax: 4772 2557
Email: townsville@braziermotti.com.au
Job No: 29060/028-02

REAL PROPERTY DESCRIPTION:
LOT 7000 ON SP 247154

DRAWN: S.ROSSO	DATUM: AHD (DERIVED) PSM 78108 RL.3.081
DESIGNED:	
CHECKED: P.MURPHY	
PROJECT MANAGER: P.PETERSEN	PROJECT DIRECTOR: P.BRADY RPEQ 7112

UDP Consulting Engineers
Urban Development Design Infrastructure Project Management
Level 1, 62 Walker Street
TOWNSVILLE QLD 4810
PO BOX 1110
TOWNSVILLE QLD 4810

Phone: (07) 4772 0868
Fax: (07) 4772 0566
Email: main@udpconsulting.com.au
Web: www.udpconsulting.com.au

URBAN LAND DEVELOPMENT AUTHORITY
THE VILLAGE - STAGE 2
RIVEREDGE BOULEVARD, OONOONBA
ROADWORKS & STORMWATER DRAINAGE PLAN

DRAWING SIZE: A1	SCALE: AS SHOWN XREF ULDD01-XR-ASCON	DRAWING No.: ULD001/102	REV: A
----------------------------	---	-----------------------------------	------------------