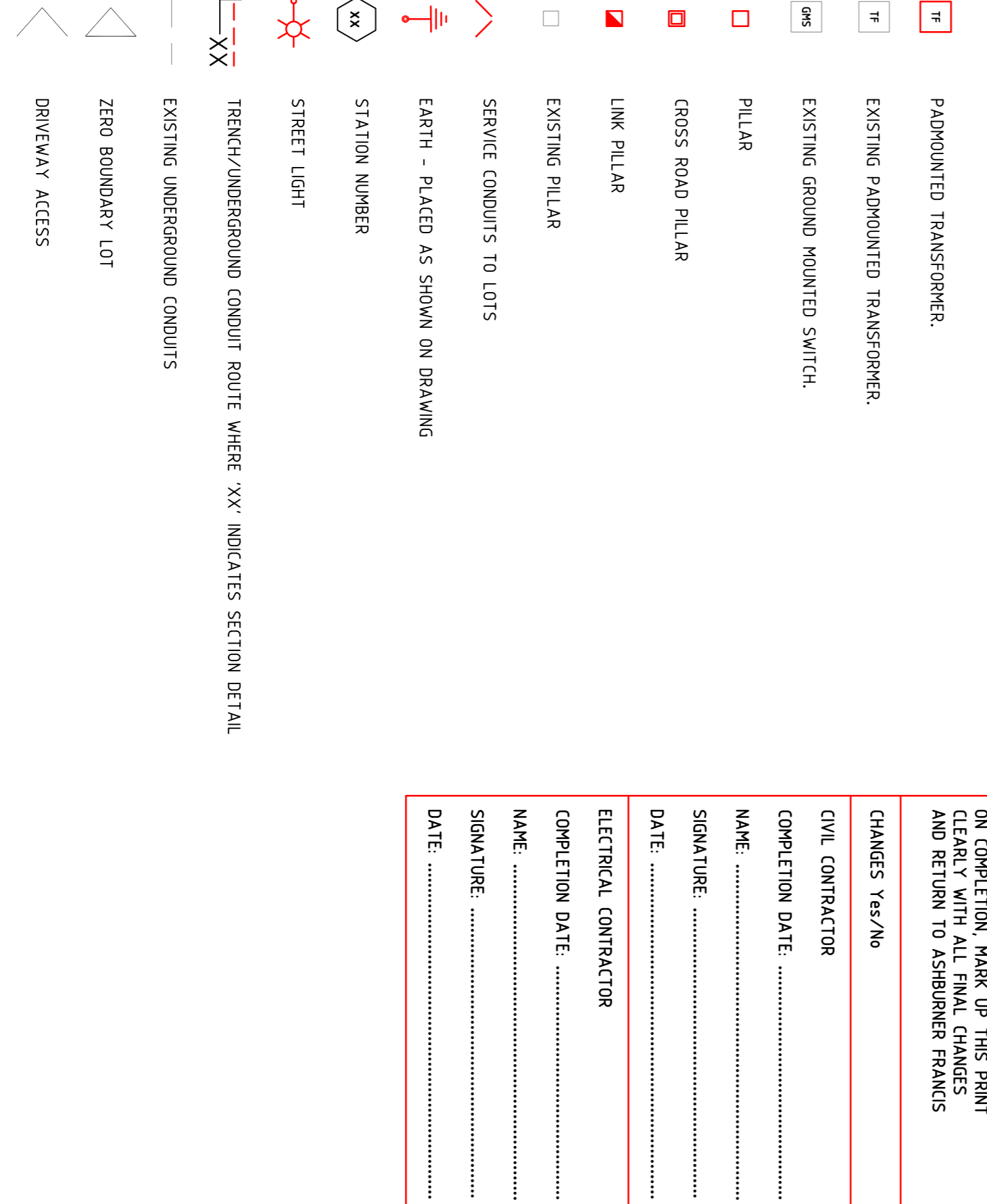


SITE PLAN: scale 1:500 @A1

LEGEND:



CONSTRUCTION NOTES:

- STANDARD NOTES**
- CONDUIT DEPTHS, ALIGNMENTS AND TRENCHING DETAILS REFER UNDERGROUND CONSTRUCTION MANUAL TRENCHING DRAWING 5163.1
 - PROVIDE POLYMERIC CABLE PROTECTION COVER IN ACCORDANCE WITH CONSTRUCTION PRACTICES DRAWING 5124.
 - DEVELOPER TO SUPPLY AND INSTALL CONDUITS, LIGHTING FOUNDATIONS, MARKERS AND SITE FINISH.
 - DEVELOPER TO CONTACT ERGON FOR SITE AUDIT IN ACCORDANCE WITH RSC07.
 - LOCAL COUNCIL TO ACCEPT STREETLIGHTS AND POSITIONS.
 - ALTERATION TO DESIGN - ERGON ENERGY MUST BE CONTACTED BEFORE PROCEEDING.
- SPECIFICATIONS**
- THIS WORKS PLAN IS TO BE READ IN CONJUNCTION WITH THE FOLLOWING ERGON ENERGY MANUALS AND SPECIFICATIONS.
- RSC07 URB MAIN SPECIFICATION
 - RSC07 URB CIVIL WORKS
 - U/G CONSTRUCTION MANUAL
 - LIGHTING CONSTRUCTION MANUAL
 - CONSUMERS INSTALLATION SHALL COMPLY WITH AS3900 2007 - SAA WIRING RULES
- CIVIL WORKS CONSIST OF**
- ALL TRENCHING
 - ALL TRENCHING INSTALLATION
 - ALL FOUNDATIONS FOR TRANSFORMERS
 - OPENING UP AND BACKFILLING OF TRANSFORMER PILLARS AND THE LIKE TO ALLOW FOR THE ELECTRICAL INSTALLATION.
 - OPENING UP AND BACKFILLING OF REQUESTED LOCATIONS TO ENABLE ERGON INSPECTIONS.
- ELECTRICAL WORKS CONSIST OF**
- TRANSFORMER CONCRETE SURROUNDS
 - ALL CABLING INSTALLATION
 - LIGHT POLES, TRANSFORMERS, PILLARS AND THE LIKE

SPECIAL NOTES

- LIVE RETICULATION CABLES, PILLARS AND TRANSFORMERS EXIST IN THE VICINITY OF STATION 1. CONFIRM LOCATION OF ALL EXISTING INFRASTRUCTURE BEFORE DIGGING. CONNECTION TO THIS STATION NUMBER IS ERGON WORKS.
- REQUIRE 3.0m x 3.0m SERVICES FREE ZONE TRANSFORMER 3 'NOTCHED' INTO THE ROAD RESERVE. CO-ORDINATE WITH SURVEYOR.
- STREET LIGHT CABLES IN LV SCHEMATIC ARE NOT SHOWN. FOR MINOR STREET LIGHTS USE 4sqmm 2 CORE COPPER NEUTRAL SCREENED.
- PROVIDE MARKER BALLS AT HV CABLE JOINT LOCATIONS AND HV SPARE CONDUIT ENDS AS PER ERGON'S STANDARD SPECIFICATION. ALSO PROVIDE ADDITIONAL MARKER BALLS AS DIRECTED BY ERGON AT PRESTART.
- WHEN REQUIRED CONCRETE ENCASE CONDUITS IN ACCORDANCE WITH ERGON STANDARDS AS PER DRAWING 5017.
- WHEN REQUIRED CONCRETE COVER CONDUITS IN ACCORDANCE WITH ERGON STANDARDS AS PER DRAWING 5016.
- LINK PILLAR AT STATION 310 NORMALLY OPEN TO STATION 6.
- STREET LIGHTING IS TO AS1518 CATEGORY P4. LANE WAY LIGHTING IS TO AS1518 CATEGORY P5.
- ALL P-CATEGORY ROAD WAY LIGHTING (MINOR LIGHT POLES) TO BE OFFSET 0.5m FROM THE BACK OF KERB TO CENTRE OF POLE FOUNDATION UNLESS OTHERWISE NOTED. ALL VOSTALOGA LIGHTS SHALL BE OFFSET A NOMINAL 0.5m FROM THE EDGE OF ROAD WAY OR PATH.
- ENGINE CAUTION TAPE DEPTH IS STRICTLY IN ACCORDANCE WITH ERGON STANDARD DRAWING 5163 350x50 BELOW FINISHED SURFACE FOR FOOTPATHS AND 500x50 FOR ROADWAYS.
- ENSURE LIGHTING CIRCUITS ARE INSTALLED IN ACCORDANCE WITH ERGON OPERATIONAL UPDATE 20120221
- ALL MEASUREMENTS ARE TAKEN FROM CAD DRAWINGS ENSURE SITE MEASUREMENTS OF ALL CABLE AND CONDUIT LENGTHS PRIOR TO ORDERING MATERIALS.
- EXISTING LIVE HV CABLE BETWEEN STATIONS ALONG RIVER EDGE BOULEVARD AND DARTER STREET. ALL TRENCHING SHALL BE DONE USING A VACUUM TRACK.
- FOR ALL WORK IN THE VICINITY OF EXISTING ERGON ASSETS, AN ERGON SAFETY OFFICER SHALL BE PRESENT. AN ERGON SAFETY OFFICER CAN BE ORGANISED BY CONTACTING 13004, ALLOW 4 WEEKS LEAD TIME WHEN ARRANGING FOR A SAFETY OFFICER TO BE ON SITE.
- EXISTING GROSS ROAD PILLAR AT STATION 310 SHALL BE UPGRADED TO LINK PILLAR. WORKS WILL INCLUDE REPLACING THE 90/450 CONDUIT BENDS INTO THE PILLAR WITH 45/7200 BENDS, RECOVERING THE EXISTING 16mm CU CABLE AND INSTALL NEW 24mm AT CABLE AND UPGRADE THE PILLAR AT STATION 6 TO A 3 WAY PILLAR. UPGRADE WORKS AT STATION 6 SHALL BE PERFORMED BY ERGON.
- CABLE BETWEEN STATION 16 TO 17 AND PILLAR AT STATION 17 SHALL BE RECOVERED. STREET LIGHTING CABLE TERMINATED AT STATION 17 SHALL BE RECOVERED AND STREET LIGHTING CIRCUITS SHALL BE RE-TERMINATED AT STATION 315 AND 317 AS INDICATED IN DOCUMENTATION.
- LOTS 81, 82, 89, 91, 92, 99 AND 101 ARE NANO LOTS. REFER DETAILS ON DRAWING E02.
- ROAD KERB WIDTH WITHIN THE LANE WAY SHALL BE A MINIMUM OF 500mm.
- ROAD TRENCHING SHALL BE NO CLOSER THAN 500mm FROM THE EDGE OF POSSIBILITY OF THE ROAD SURFACE SUBSEQUENT DURING EXCAVATION.

LEGEND:

▣	PADMOUNTED TRANSFORMER.
▣	EXISTING PADMOUNTED TRANSFORMER.
◻	EXISTING GROUND MOUNTED SWITCH.
◻	PILLAR
◻	GROSS ROAD PILLAR
◻	LINK PILLAR
◻	EXISTING PILLAR
◻	EXISTING PILLAR
◻	SERVICE CONDUITS TO LOTS
▴	EARTH - PLACED AS SHOWN ON DRAWING
○	STATION NUMBER
⊗	STREET LIGHT
---	TRENCH/UNDERGROUND CONDUIT ROUTE WHERE 'XX' INDICATES SECTION DETAIL
---	EXISTING UNDERGROUND CONDUITS
▴	ZERO BOUNDARY LOT
◁	DRIVEWAY ACCESS

ON COMPLETION, MARK UP THIS PRINT CLEARLY WITH ALL FINAL CHANGES AND RETURN TO ASHBURNER FRANCES

CHANGES Yes/No	
CIVIL CONTRACTOR	
COMPLETION DATE	
NAME	
SIGNATURE	
DATE	
ELECTRICAL CONTRACTOR	
COMPLETION DATE	
NAME	
SIGNATURE	
DATE	

FOR CONSTRUCTION

©Copyright Ashburner Frances Pty. Ltd., 2013.
 This drawing is the property of Ashburner Frances Pty. Ltd. and must not be used, retained or copied without the written permission of Ashburner Frances Pty. Ltd.

ELECTRONIC TRANSFER
 Where this drawing has been transferred by electronic media, no responsibility is accepted for the usability, completeness or accuracy of the electronic data.
 Check reference scale below to confirm accuracy of drawing reproduction.

no.	date	Issued/Amendment	MM	MM	MM	MM	MM	MM	MM
F	19-02-13	REVISED CONDUITS	MM	MM	MM	MM	MM	MM	MM
E	07-12-12	STATION 313 NOT NOTCHED	MM	MM	MM	MM	MM	MM	MM
D	27-11-12	CONSTRUCTION ISSUE	MM	MM	MM	MM	MM	MM	MM
C	23-11-12	REVISED NANO LOTS	MM	MM	MM	MM	MM	MM	MM
B	07-11-12	NANO LOTS ADDED	MM	MM	MM	MM	MM	MM	MM
A	17-08-12	ORIGINAL ISSUE	MM	MM	MM	MM	MM	MM	MM

TRENCH SECTION DETAILS: not to scale

MINIMUM CLEARANCE TO TELECOMMUNICATIONS

LEGEND:

- CAUTION TAPE ORANGE
- TELECOMMUNICATIONS CONDUIT
- PUBLIC LIGHTING CONDUIT
- LV CONDUIT
- HV CONDUIT

TRENCH SECTION DETAILS:
 AA, AC, CB, EA, EB, GB

ASHBURNER FRANCES consulting engineers
 551 Ridge Street, Ashburner Frances Pty. Ltd. (A.B.N. 66 069 976 977)
 15 079 422 4333
 15 079 422 4333

PROJECT:
THE VILLAGE STAGE 2
 location: OONOOBA, TOWNSVILLE

DESIGNED BY: D BRIBANE
DRAWN BY: D DAMIAN
CHECKED BY: D DAMIAN

ELECTRICAL SERVICES
 URD AND STREETLIGHTING LAYOUT PLAN

DATE: JULY 2012
SCALE: AS SHOWN @A1

NO.: 711570
CAD file name: 124-172 ERI, E02, E01 F
sheet no.: E01
Issue: F

