



# THE VILLAGE

Riverside. Cityside.



Display  
Home Guide



# Your display home map



Reef Coast Constructions

Ron Jones The Builder

Ellis Developments

Ellis Developments

Sales & Information Office

Childcare Centre

Potential Retail Centre

Proposed Community Centre

Riveredge Boulevard

Riveredge Boulevard

Holjoak Avenue

Holjoak Avenue

Darter Street

Darter Street

Target Street

Wilmot Lane

Goode Lane

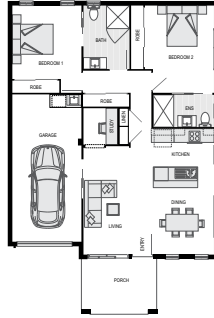
Lawrie Avenue

Lawrie Avenue





**LOT 517**  
 Lot size: 160M<sup>2</sup>  
 House size: 107M<sup>2</sup>



Cleverly designed to utilise every inch of space, this home offers maximum internal living. Finished to the highest standard, the custom kitchen and lavish bathrooms result in a timeless, desirable design.

**LOT 545**  
 Lot size: 325M<sup>2</sup>  
 House size: 177M<sup>2</sup>



Offering 3 bedrooms plus a study, this family home has been expertly designed with a focus on sophisticated style. Creating a seamless transition between indoor and outdoor living, the Watermark 177 makes entertaining a breeze!



**LOT 65**  
 Lot size: 257M<sup>2</sup>  
 Granny flat size: 30M<sup>2</sup>



An extra feature to this home is the attached one-bedroom unit. This provides an excellent investment opportunity for the savvy buyer.

**LOT 65**  
 Lot size: 257M<sup>2</sup>  
 House size: 148M<sup>2</sup>

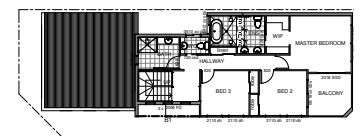
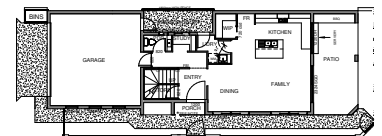


This innovative three-bedroom home uses clever open plan living to maximise all available space.

**LOT 1033**  
 Lot size: 203M<sup>2</sup>  
 House size: 216M<sup>2</sup>



This customised terrace design capitalises on a unique lot type and features high quality finishes that result in luxurious living. Featuring a lavish kitchen and bathrooms, this home boasts a deluxe feel.





**THE VILLAGE**  
Riverside. Cityside.



**Call 1300 650 689**

Email: [info@thevillagetownsville.com.au](mailto:info@thevillagetownsville.com.au)  
[www.thevillagetownsville.com.au](http://www.thevillagetownsville.com.au)

The Village Sales & Information Office  
12 Riveredge Boulevard  
Oonoonba Queensland 4811



**Queensland**  
Government